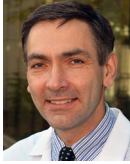


## BOARD MEMBERS



**Igor Atsaturov, MD, PhD**  
**Co-Chairman, Caris Molecular Tumor Board**  
 Associate Professor, Medical Oncology, Co-leader –  
 Pancreatic Cancer Research  
*Marvin and Concetta Greenberg Pancreatic Cancer Institute,  
 Fox Chase Cancer Center*



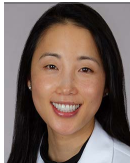
**Rana R. McKay, MD**  
**Co-Chairman, Caris Molecular Tumor Board**  
 Associate Professor of Medicine  
*University of California San Diego*  
 Co-Leader, Genitourinary Oncology  
*Moores Cancer Center*



**Arielle Heeke, MD**  
 Associate Professor, Medical Oncology  
*Levine Cancer Institute, Atrium Health*



**Matthew Ingham, MD**  
 Assistant Professor, Department of Medicine  
*Columbia University Medical Center*



**Irene Kang, MD**  
 Assistant Professor of Medical Oncology  
 Medical Director, Department of Medical Oncology –  
 Breast, Women's Health  
*City of Hope, Orange County*



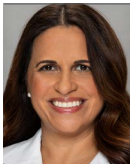
**Justin Moser, MD**  
 Associate Clinical Investigator  
*HonorHealth Research and Innovative Institute*  
 Clinical Assistant Professor  
*University of Arizona College of Medicine – Phoenix*



**Misako Nagasaka, MD, PhD**  
 Associate Clinical Professor  
*Chao Family Comprehensive Cancer Center,  
 University of California Irvine*



**Andrew Nelson, MD, PhD**  
 Associate Professor, Department  
 of Laboratory Medicine and Pathology  
*Masonic Cancer Center, University of Minnesota*



**Estelamari Rodriguez, MD, MPH**  
 Clinical Research Lead Thoracic Site Disease Group  
*Sylvester Comprehensive Cancer Center, University of Miami*



**Kristen Spencer, DO, MPH**  
 Assistant Professor of Medicine  
*NYU Grossman School of Medicine*  
 Director, Phase I Program  
*Perlmutter Cancer Center, NYU Langone*



**Premal Thaker, MD, MS**  
 Professor, Obstetrics and Gynecology  
 Director, Gynecological Oncology Clinical Research  
*Washington University School of Medicine*



**Trisha Wise-Draper, MD, PhD**  
 Associate Professor  
*University of Cincinnati*  
 Medical Director  
*University of Cincinnati Cancer Center Clinical Trials Office*

## CARIS MEMBERS

**Farah Abdulla, MD**  
 Senior Medical Director, POA

**Chadi Nabhan, MD, MBA, FACP**  
 Chairman, Precision Oncology Alliance

**Milan Radovich, PhD**  
 SVP, Chief Precision Medicine Officer

**Jeff Swensen, PhD**  
 Senior Director, Molecular Genetics

**Rebecca Feldman, PhD**  
 VP, Biomarker & Drug Intelligence

**Theodore Nicolaidis, MD**  
 Senior Medical Director, Clinical Oncology

**George W. Sledge, MD**  
 EVP, Chief Medical Officer

**Ari VanderWalde, MD**  
 VP, Clinical Development

**Daniel Magee, PhD**  
 Director, Cognitive Bioinformatics

**Matthew Oberley, MD, PhD**  
 Executive Medical Director, Caris Pathology

**Norm Smith, MD**  
 Senior Medical Director, POA

**Joanne Xiu, PhD**  
 VP, Clinical & Translational Research